

Basin®



NO VISIBLE^{green} + HPC-5070 + ECO-2020

USER MANUAL



Topcoat

Primer



Basin ChemEco nv
Gravestraat 7A
B-8750 WINGENE
T : +32 51 65 00 10
F : +32 51 65 81 05
info@basin.be

www.basin.be



NO VISIBLE^{green} +

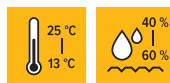
HPC-5070 + ECO-2020

USER MANUAL 2/4

Please apply the following steps to obtain the best results. **Important: read technical datasheet first.**

Step 1 - Conditions

It is recommended to apply the varnish at a wood and room temperature of 13 to 25 °C. If temperatures are too high, the water will evaporate too quickly, causing overlap marks and insufficient protection of the parquet. The relative humidity of the room must be between 40 to 60 % (WTCB). If the relative humidity is too low, fast evaporation will occur and the irregular drying of the product will adversely affect the protection of the top layer. It is important to let the wood acclimatize to the same temperature as the one it is being finished in. Please ensure there is sufficient ventilation and avoid strong air currents.



Application

Humidity

Step 2 - Tools

1. Bucket HWZ-90814 + roster HWZ-907034
2. Mixer HWZ-0401 or HWZ-90578 + drill
3. Roller HWZ-00713 / HWZ-00714 + grip HWZ-0070 / HWZ-00701 or brush HWZ-0049 / HWZ-0046 or spray gun (Ø 2.0) HWZ-01332



Roller / Brush

Spray Gun

Step 3 - Preparation of the parquet

On new parquet/wood: always test first to ensure that, in case of pretreated floors, the floor has not been pretreated with a fine layer of white wax as this can cause problems when finishing with a water-based varnish. On untreated wood, a light sanding with grain P120 is all that is required.

On old parquet/wood: sand back to bare wood using three grades of sandpaper: (1) P16-40 (2) P60-80 and (3) P100-120. Test on a small area first before finishing the whole surface.

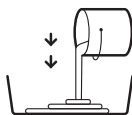
Please note: on smoked and/or aged parquet that has been treated with chemical agents (especially Sodium 'NaOH' or Potassium Hydroxide 'KOH'), a whitish glow can show when applying the product. Such materials cause poor adhesion of the NO VISIBLE^{green} + with the foundation. Surfaces that were treated with stains that contain bleach (Sodium Hypochlorite) must be rinsed well with water. The NO VISIBLE^{green} + can not be applied on chemical stains.

Step 4 - Preparation of the product



1. Shake the jar HPC-5070 well before use.

1 minute

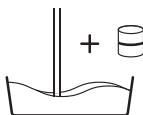


2. Pour out the jar HPC-5070 into a bucket.



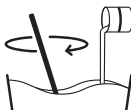
3. Stir the HPC-5070 well with a mechanical mixer.

5 minutes

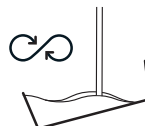


4. Slowly add the entire jar of ECO-2020.

mixing ratio: 10 / 1



5. Important: add the activator ECO-2020 into the bucket while stirring.



6. Stir again and slightly angle the bucket.

5 minutes

Step 5 - Application

1. Apply the product in an even way and finish in the direction of the wood fibers (or in the direction in which the light hits according to the type of placement). Avoid thickening. Apply in small areas of 2 m². Only by doing so, you can ensure that the edges are applied wet on wet within 10 minutes. Don't apply too much pressure to make sure the layers are thick enough. **2.** As it dries, the whitish shine on the product will disappear after a couple of minutes. Regularly check the consumption of the product. Make sure that the recommended consumption is respected (\pm 1 L per 4 m² of finished parquet). **3.** After applying the 1st layer, a drying time of 4 hours is required (at a temperature of 13 to 25 °C and a humidity of 40 to 60 %). **4.** After applying the 2nd layer, a drying time of 12 hours is required after which you sand this layer with grain P220 before applying the 3rd layer. Thoroughly clean the surface before applying a new layer. It is highly recommended to apply NO VISIBLE green+ in 3 layers. **5.** Check the consumption at the end of the 3rd layer. The consumption must amount to a minimum of 240 g/m² (so 1 L per 4 m² of finished parquet). **6.** If this consumption is not obtained, a 4th layer will have to be applied in order to comply with the product's characteristics.

Attention: when spraying, you can only attain 50 g/layer/m² which means you will have to apply 5 to 6 layers. For intensive use, we recommend using 1 layer of NO VISIBLE green+ and finishing with 2 layers of PROTECT HD-4008 + PUR-1020.



Stir Well



Roller / Brush



Spray Gun



Consumption



Temperature



Humidity



Pot Life



Drying Time



Mixing Ratio

NO VISIBLE^{green} + HPC-5070 + ECO-2020

USER MANUAL 4/4

Step 6 - Hardening

In normal conditions (refer to Step 1), the parquet will be dust-dry after 30 minutes. Low temperatures, low air humidity and excessive thickness of the applied layers can adversely influence the drying time of the product. After applying the 1st layer, let dry for 4 hours. After applying the 2nd layer, wait 12 hours before sanding with grain P220. The maximal hardness of the product is obtained after 7 days. Only after 7 days the wooden floor may be covered and can be intensively used/cleaned.



Drying Time



VOC Level

Tips & tricks:

Make sure all loose hairs and fibres are removed from the roller and only use dry tools (never use a wet roller). The type of roller you use is important and can influence the consumption of the products.

Regularly check if the recommended consumption is being obtained. When the product has been stored for too long (see EXP Date on the label/technical datasheet), it can contain small particles that need to be filtered out. In this case, use a filter of 190 micron (AD-0190). To facilitate application (including the 1st layer, mainly when working with larger surfaces) it is recommended to add 5 to 10 % of water to the 2 component mixture. This lessens the viscosity of the product and simplifies the rolling. After adding the water, mix for 3 minutes. Never dilute the product before adding the activator.



EXP Date



Pot Life

Disclaimer:

Due to the versatility of the products, application possibilities and application processes, this information is only given with the purpose to inform. It is highly recommended to check by yourself prior to performing the final works. Our experience has taught us that every user develops his own way of working. This information was provided, oral or written, on the explicit demand of the client. This information is given in good faith and based on the current experience of Basin ChemEco nv. There can not be inferred by any means any responsibility on behalf of Basin ChemEco nv. The technical files can be modified by Basin ChemEco nv at any time without preceding inform - Basin ChemEco nv is not responsible for results caused by incorrect use of the product & instructions such as e.g. quantities, timing, choice of material, temperature, subsoil, influence of light etc.

Basin ChemEco nv
Gravestraat 7A
B-8750 WINGENE
T : +32 51 65 00 10
F : +32 51 65 81 05
info@basin.be



www.basin.be